

Photoshop Elements (Mac)--Installation Instructions for iCorrect OneClick 1.5, iCorrect Portrait 1.5, and iCorrect EditLab Pro 5.5 Plug-ins. (Mac OSX 32 bit versions)

(Note: Instruction screenshots will reference iCorrect Portrait but also apply to iCorrect OneClick 1.5 and iCorrect EditLab Pro 5.5)

1. After downloading the installer .zip file extract the .zip file to access the folder that contains the plug-in installer instructions (pdf) and the plug-in install program.

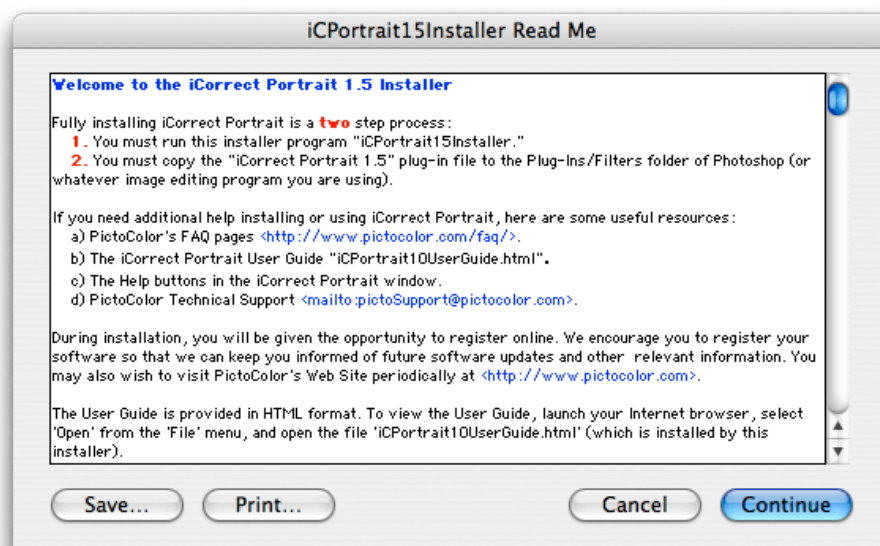


iCPortrait15Installer

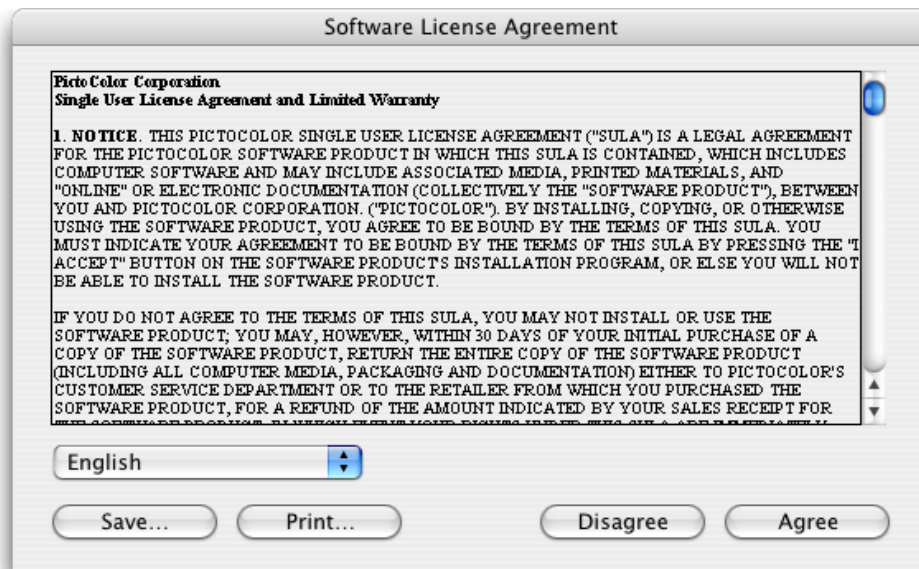
2. At the welcome screen, click *Continue*.



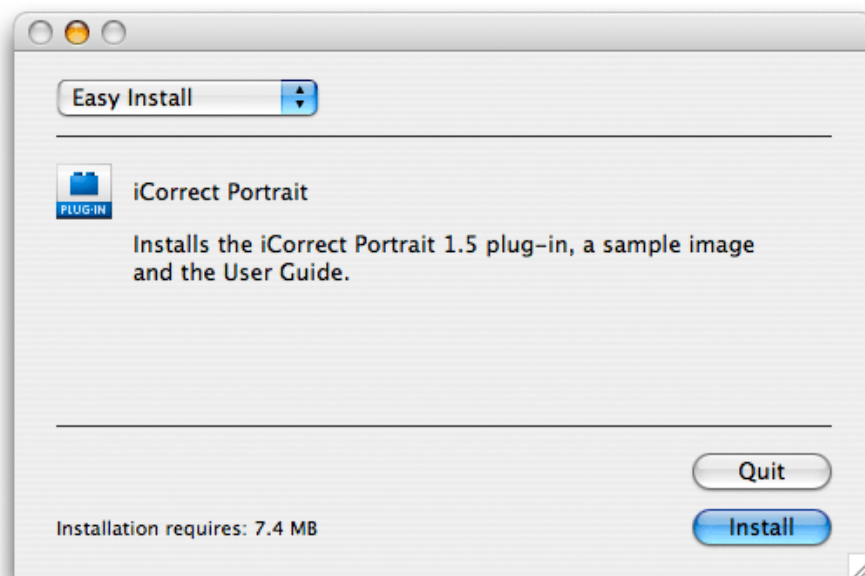
3. Read the installer notes and click *Continue*.



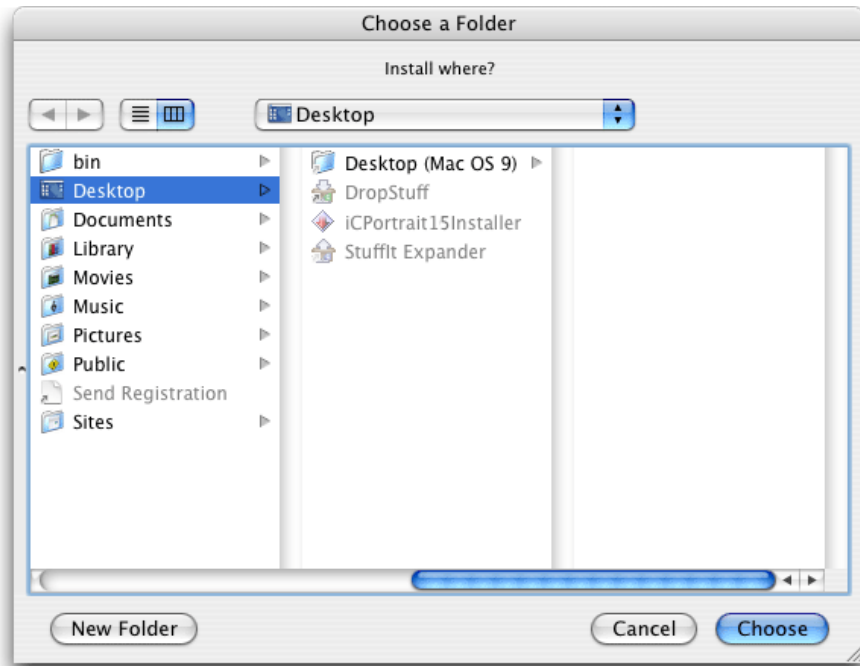
4. Read the License Agreement and click *Agree* if you agree to its terms.



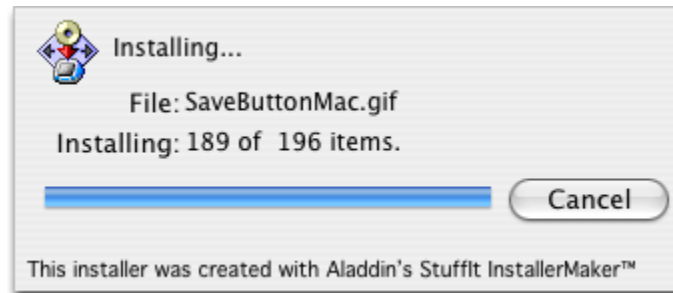
5. Select *Easy Install* and click *Install*.



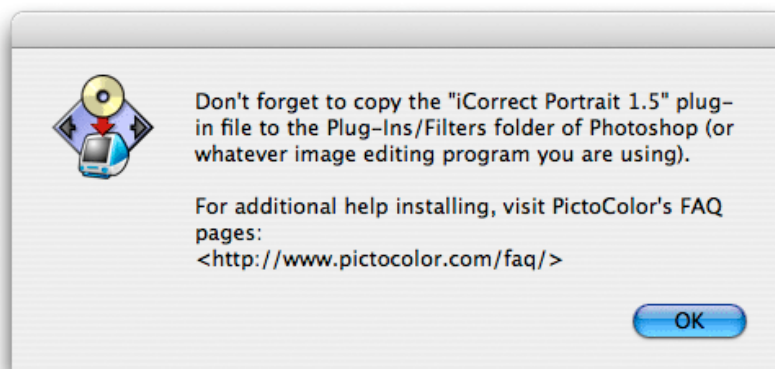
6. Select a location for the installation and click *Choose*.



7. A progress display appears during installation.



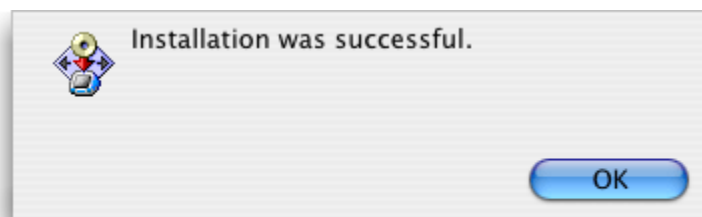
8. Read the reminder message about the second installation step that must be performed (see **11** and **12** below).



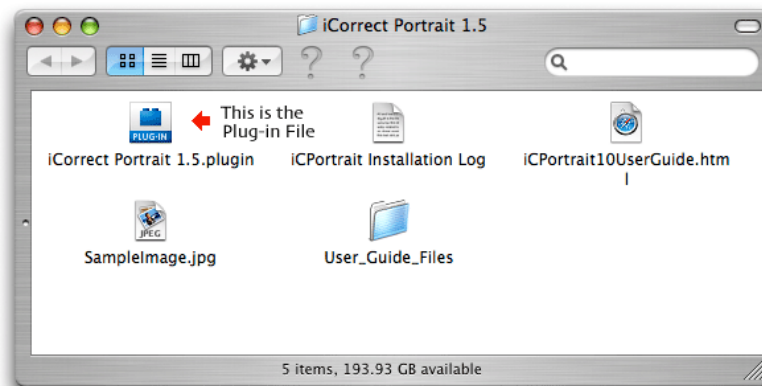
9. If you wish to register your software now, click *Register Now...*, otherwise click *Cancel*.



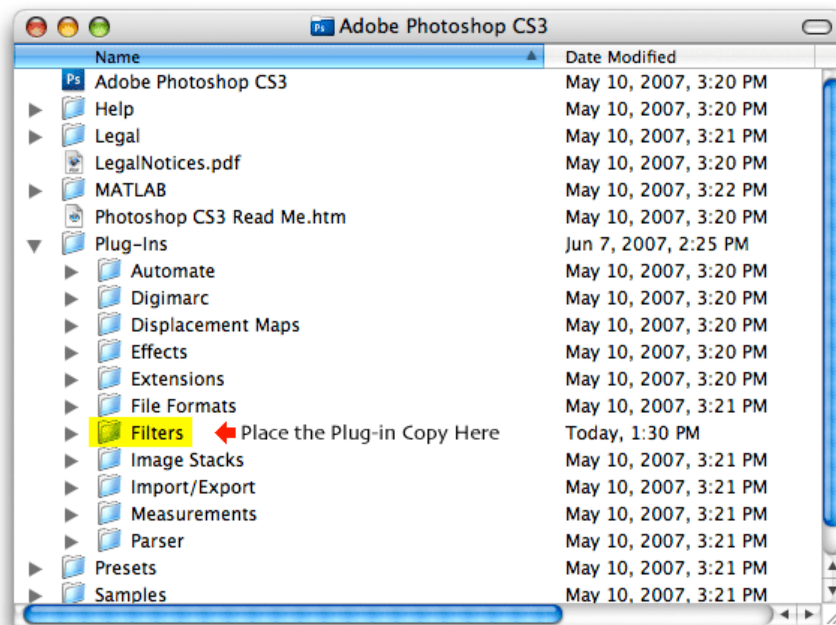
10. A message will indicate a successful installation.



11. Look at the files that were installed. The User Guide may be viewed by opening the file named **iCPortrait10UserGuide.html** with a web browser. The plug-in file **iCorrect Portrait 1.5.plugin** must be copied into **Photoshop's Elements Plug-Ins** folder, as described in step 12.



12. The iCorrect Portrait 1.5.plugin plug-in file must be copied into Photoshop's Elements Plug-Ins folder, as shown here. **Note: Elements does not have the Filters subfolder so the plug-in should be placed in the Plug-ins folder.**



10. Selecting and Launching iCorrect Plug-in

After copying the iCorrect plug-in in the Elements Plug-ins folder it is ready to use. (Note: if Elements was open during plug-in installation you must close it and re-open before the plug-in can be used.) With an image open in Elements go to the Filter menu and select PictoColor/iCorrect Portrait to launch the plug-in. Note: The first time you launch iCorrect plug-in you will have to enter the serial number to activate it.

